




LEGEND

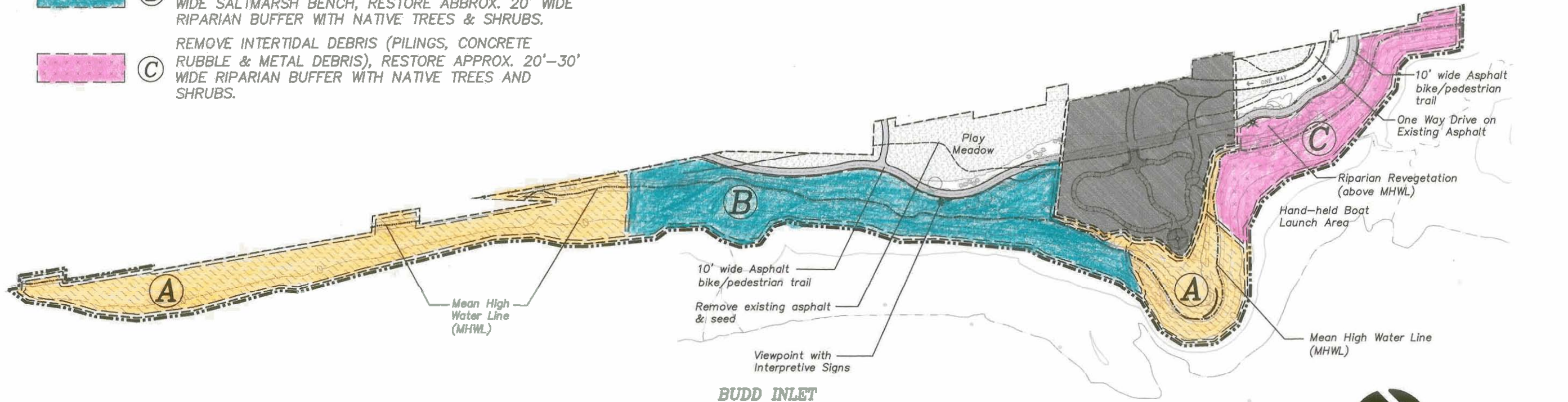
 WEST BAY PARK BOUNDARY

WATER ACCESS GRANT AREA

 A.L.E.A. GRANT AREA

SHORELINE RESTORATION AREAS:

-  (A) PRESERVE INTERTIDAL BEACH & SALTMARSH, REMOVE OCCASIONAL MISCELLANEOUS DEBRIS.
-  (B) REMOVE INTERTIDAL DEBRIS (CONCRETE & ASPHALT RUBBLE & METAL DEBRIS), RESTORE APPROX. 10' WIDE SALTMARSH BENCH, RESTORE APPROX. 20' WIDE RIPARIAN BUFFER WITH NATIVE TREES & SHRUBS.
-  (C) REMOVE INTERTIDAL DEBRIS (PILINGS, CONCRETE RUBBLE & METAL DEBRIS), RESTORE APPROX. 20'-30' WIDE RIPARIAN BUFFER WITH NATIVE TREES AND SHRUBS.



**A.L.E.A. GRANT SITE PLAN
WEST BAY PARK**

